



accutherm

INTERNATIONAL

ABN 17 100 208 964

VICTORIAN EDUCATION DEPARTMENT ACCU-TEST

GAS SAFETY SHUT OFF SYSTEM

Technical Sheet



Head Office (Melbourne)

18 Pickering Road
Mulgrave VIC 3170
T: +61 3 9763 6335
F: +61 3 9763 8003
sales@accutherm.com.au



Assured Gas Shut Off Protection

The Safety Gas Shut-off system is purposely designed to prevent gas being restored to open unsafe downstream piping and can be easily linked to emergency interlocks. ACCU-TEST System is supplied complete with a control panel & a solenoid valve assembly

- Function of pressure proving according to AS5601 Gas Shut-Off
- Easily interlocked with additional safety devices or external systems, Emergency stop buttons, fire alarm etc.
- Required where downstream appliances do not have integral flame failure
- Assembled & ready for easy installation
- Automatic testing of downstream pressure
- Manual activation required following failed pressure test
- Can be monitored by BMS

APPLICATION:

The Gas Safety Shut-off system (ACCU-TEST) is purposely designed to prevent gas being restored to open, unsafe downstream piping, appliances and outlets. The safety of personnel and plant is given added protection with the installation of the ACCU-TEST system.

The gas supply can be interrupted either by manual activation or automatically. The system is fitted with a 24 hour 7 day timer, for programming during commissioning, to set the time period each day that the main gas supply is available to be switched on and the time that the main gas supply is switched off. It is also possible to safely shut off the gas flow by connecting remote interlocks (such as Emergency Stop "E-Stop" buttons, fire alarms or such like inputs) into the control circuit.

Linking to remote activation devices will ensure the safe isolation of gas flow making it ideal for appliances in residential and commercial kitchens, schools, TAFE colleges, hospitals, hotels, apartment buildings etc. The ACCU-TEST is an ideal solution for the protection of appliances that do not have inbuilt safety shut-off controls.

The ACCU-TEST system will also cut the gas flow to downstream pipe work in the event of a power failure. Once power is restored the system will need to be re-set - this requires all gas outlets downstream to be closed before the system will allow gas to be safely delivered.

The valve assembly is supplied with an adjustable limiting orifice valve and gas pressure switch that will both require setting after installation and during commissioning.

Once the system has been tripped, restoration of gas is only possible by following the resetting procedure.

Building Management System (BMS)

ACCU-TEST System can be remotely monitored by a building management system. It is recommended that filters, gas pressure regulators and other componentry is installed upstream and the ACCU-TEST is installed downstream, as close the appliance(s) as possible due to the manual reset function of the system.

Emergency Interlocks

ACCU-TEST System can be easily interlock with an emergency stop button, gas leak sensor/alarm, carbon monoxide sensor/alarm, ventilation pressure switch, fire alarm or sprinkler system.

INSTALLATION:

The ACCU-TEST gas train consists of the following components:

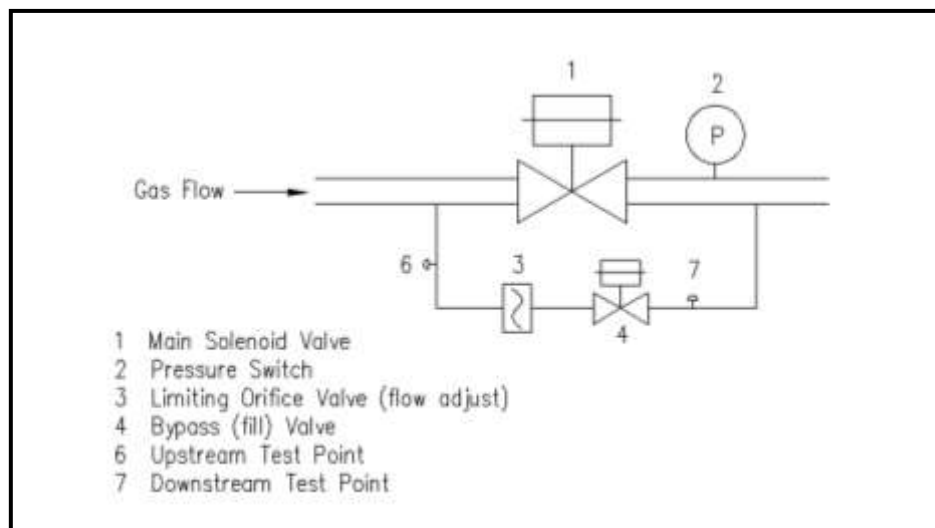


Figure 1 – Gas Train Components

Note: The components shown may be in a different position on some models.

Electrical Power Consumption:

ACCU-TEST Size	15mm	20mm	25mm	32mm	40mm	50mm	65mm
Main Electrical Supply	240VAC, 1Ph, 50Hz						
Minimum Electrical Power (W)	45W	45W	45W	140W	140W	140W	200W

ORDERING INFORMATION:

Victorian ACCU-TEST - 240VAC Sizing Chart – up to 7kPa inlet pressure						
Size	Connection	Natural Gas*		LPG*		Part Number:
		MJ/hr	m3/hr	MJ/hr	m3/hr	
15mm	BSP	313	8.1	477	5.0	LS-FSVP-015-ACCU-240VAC
20mm	BSP	619	15.9	944	9.9	LS-FSVP-020-ACCU-240VAC
25mm	BSP	782	20.1	1,193	12.5	LS-FSVP-025-ACCU-240VAC
32mm	BSP	1,433	36.9	2,187	22.9	LS-FSVP-032-ACCU-240VAC
40mm	BSP	1,889	48.7	2,883	30.2	LS-FSVP-040-ACCU-240VAC
50mm	BSP	2,605	67.1	3,977	41.6	LS-FSVP-050-ACCU-240VAC
65mm	BSP	4,233	109.1	6,462	67.7	LS-FSVP-065-ACCU-240VAC

***Based on 2.5mbar Pressure Drop**

OPTIONAL ITEMS:

Other options available on request include (but not limited to);

- Fire Interlock Relays
- Gas Detection
- Remote Stop Buttons (Twist or Key Reset)
- Emergency Stop Labels

Disclaimer

Accutherm International Pty Ltd continually improves and upgrades its products and reserves the right to alter the design and documentation of this device without notice.

Accutherm International Pty Ltd shall not be liable for damages resulting from misapplication or misuse of its products.

The design and integrity of all interlocks connected to the ACCU-TEST are the responsibility of the installing contractor.