

GULLIVER RSF SERIES

The Riello Gulliver RS5F, is a new model of the series of one stage gas burners, developed to respond to any request for light industrial processes like bakery ovens, spray painting ovens, small steam or thermal boilers and all applications which require a reliable, user-friendly industrial product with enhanced performance and specific functions.

The Gulliver RS5F series has an output ranging from 160 to 330 kW, uses the same components designed by Riello for the Gulliver series and have the same ventilation system and overall dimensions as the previous one stage gas model.

The burners are fitted with a microprocessor-based burner safety control box which supplies indication of operation and diagnosis of fault cause.

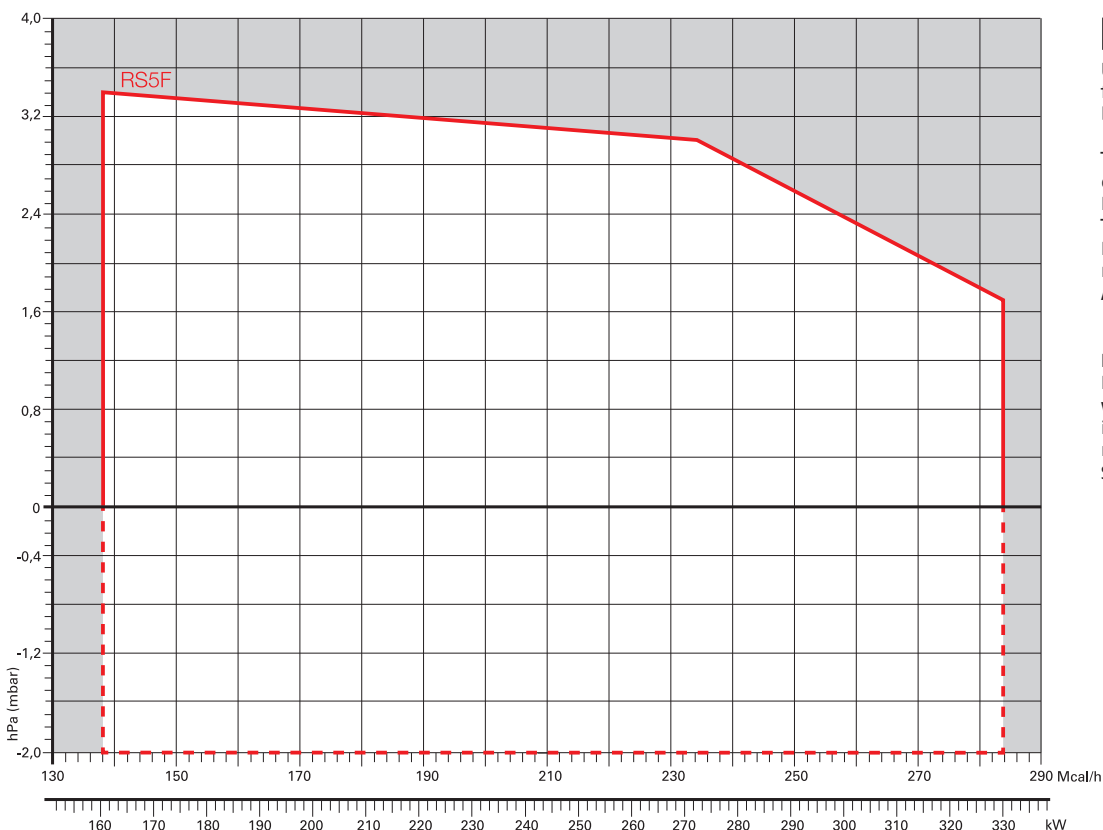
This new burner can operate on 50 or 60 Hz and a Voltage 220 - 230 Volt (dual frequency) and it is conform to the EN 676 Standard (Forced draught gas burners) and to European Directives for EMC, Low Voltage and Machinery. For depressurised working field see EN 746-2 Standard.

All the Gulliver RS5F burners are fired before leaving the factory.



RS5F

160 ÷ 330 kW



Useful working field for choosing the burner

Test conditions conforming to EN676
 Temperature: 20°C
 Pressure: 1013,5 mbar
 Altitude: 0 m a.s.l.

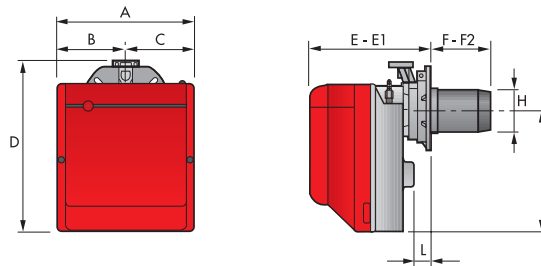
IMPORTANT:
 For the part of the working field that is depressurised, refer to EN 746-2 Standard.

One Stage Gas Burners

GULLIVER RSF SERIES

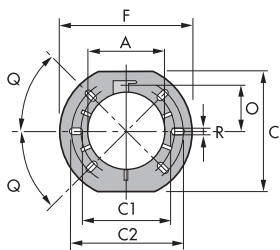
Overall dimensions (mm)

BURNER



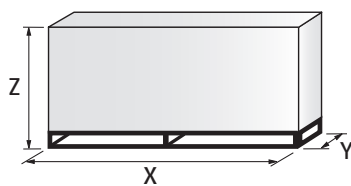
MODEL	A	B	C	D	E	E1	F	F2	H	I	L
► RS5F	300	150	150	392	278	300	225	203	137	286	45

BURNER - BOILER MOUNTING FLANGE



MODEL	A	C	C1	C2	F	O	Q	R
► RS5F	137	203	170	200	218	80,5	45°	11

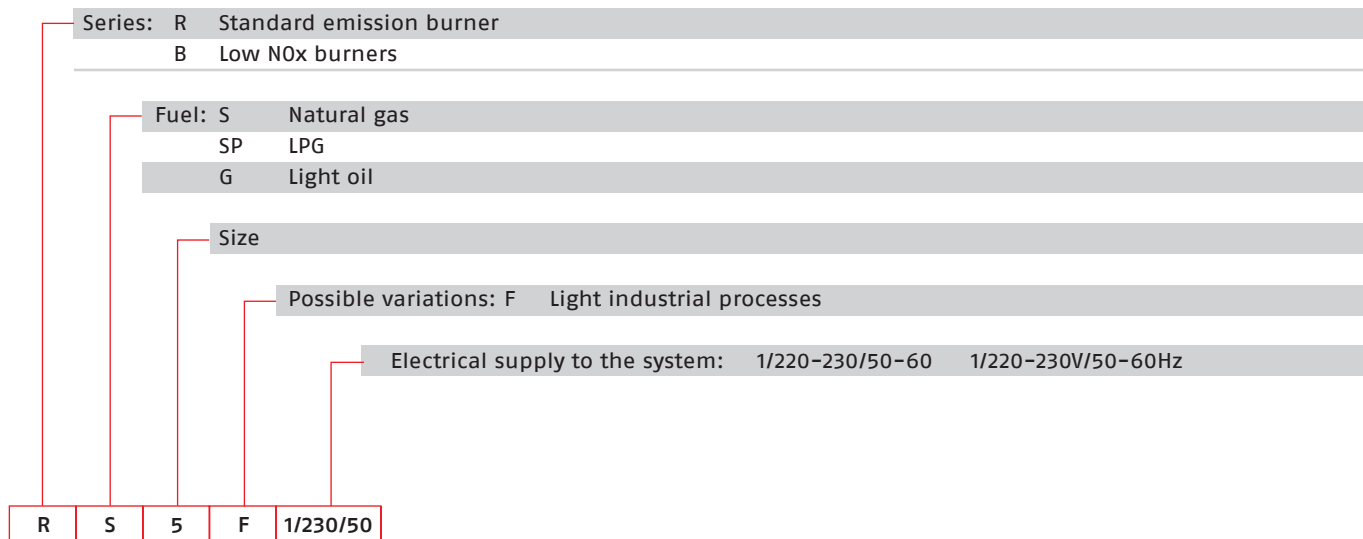
PACKAGING



MODEL	X	Y	Z	kg
► RS5F	600	345	430	18

Specification

DESIGNATION OF SERIES



STATE OF SUPPLY

Monobloc, gas burner, completely automatic, one stage operation, made up of:

- Fan with forward curve blades
- Cover lined with sound-proofing material
- Air damper, always open in stand by, with external adjustment, with no need to remove the cover
- Single phase electric motor 220-230 V, 50-60 Hz
- Combustion head fitted with:
 - stainless steel head cone, resistant to high temperatures
 - ignition electrodes
 - ionisation probe
 - gas distributor
 - flame stability disk
- Flame inspection window
- Adjustable air pressure switch, with graduated selector, to guarantee burner lock out in the case of insufficient combustible air
- Microprocessor-based burner safety control box, with diagnostic and remote reset functions
- Protection filter against radio interference (included into burner safety control box)
- IP X0D (IP 40) electric protection level.

Standard equipment:

- Flange with insulating gasket
- Screw and nut for flange
- Screws and nuts for flange to be fixed to the heat generator
- 7-pin plug
- Remote control release kit
- Instruction handbook for installation, use and maintenance
- Spare parts catalogue.

One Stage Gas Burners

GULLIVER RSF SERIES

Available models

Burners

CODE	MODEL	HEAT OUTPUT		TOTAL ELECTRICAL POWER (kW)	CERTIFICATION	NOTE
		(kW)	NATURAL GAS (Nm ³ /h)			
3761971	RS5F 1/220-230/50-60	160 - 330	16,0 - 33,0	0,430 (at 50 Hz) - 0,600 (at 60 Hz)	CE - 0085 BM0114	(1)

Net calorific value G20: 10 kWh/Nm³ - Density: 0,71 kg/Nm³.
The burners of RSF series are in according to EN 676.
(1) With plug and socket.

Gas Trains

GAS TRAIN CODE *	GAS TRAIN MODEL	NATURAL GAS		LPG		NOTE
		BURNER (type)	ADAPTER (code)	BURNER (type)	ADAPTER (code)	
3970549	MB 410/1 - F3SD 20	RS5F		RS5F		(1) (2)
3970550	MB 412/1 - F3SD 20	RS5F		RS5F		(1) (3)
3970558	MB 415/1 - F3SD 30	RS5F		RS5F		(1)

Please see Designation of Gas Train Series in the page before the Catalogue index.

* Gas trains are 230V/50Hz - 220V/60Hz electrical supply.

(1) With installed plug.

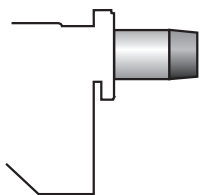
(2) RS5F ≤ 200 kW with natural gas.

(3) RS5F ≤ 300 kW with natural gas.

The valve seal control device is compulsory (conforming to EN 676) on gas trains to burners with a maximum output over 1200 kW. To select the gas train please refer to the technical data leaflet and/or instruction manual.

Burner accessories

Extended head kit



Burners standard head can be transformed into "extended head" versions by using the special kit.

BURNER	STANDARD HEAD LENGTH (mm)	EXTENDED HEAD LENGTH (mm)	KIT CODE
▶ RS5F	203 ÷ 225	302 ÷ 317	3001016

LPG kit



For burning LPG gas, a special kit is available to be fitted to the combustion head on the burner, as shown in the following table.

BURNER	KIT CODE FOR STANDARD HEAD	KIT CODE FOR EXTENDED HEAD
▶ RS5F	3001011	3001011

Burner accessories

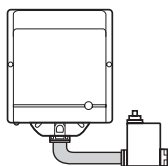
Ground fault interrupter kit



A "Ground fault interrupter kit" is available as a safety device in case of electrical system fault. It is supplied with burners with pin plug.

BURNER	KIT CODE
▶ RS5F	3001180

Multibloc rotation kit



There is a special kit available that can be used to install the burner turned 180°. This kit is designed to ensure the gas train valve properly.

BURNER	KIT CODE
▶ RS5F	3001178

7-pin plug kit

If necessary a 7-pin plug kit is available (in packaging of n. 5 pieces).

BURNER	KIT CODE
▶ RS5F	3000945

PC interface kit



To connect the control box to a personal computer for the transmission of operation, fault signals and detailed service information, an interface adapter with PC software are available.

BURNER	KIT CODE
▶ RS5F	3002731

Gas train accessories

Seal control kit



To test the valve seals on the gas train a special "seal control kit" is available.

GAS TRAIN	KIT CODE for 50 Hz operation	KIT CODE for 60 Hz operation
▶ MB/1 type	3010123	20050030