

GULLIVER RGDF SERIES

The Riello Gulliver RG5DF is a new model of one stage light oil burner, developed to respond to any request for light industrial processes like bakery ovens, spray painting ovens, small steam or thermal boilers and all applications which require a reliable, user-friendly industrial product with enhanced performance and specific functions.

This model uses the same components designed by Riello for the Gulliver series and has the same ventilation system and overall dimensions as the previous two stage light oil model.

This new burner can operate on 50 or 60 Hz and a Voltage 220 - 230 Volt (dual frequency). It is conform to the EN 267 Standard (Forced draught oil burners) and to European Directives for EMC, Low Voltage and Machinery. For depressurised working field see EN 746-2 Standard.

The Gulliver RG5DF burner is fired before leaving the factory.

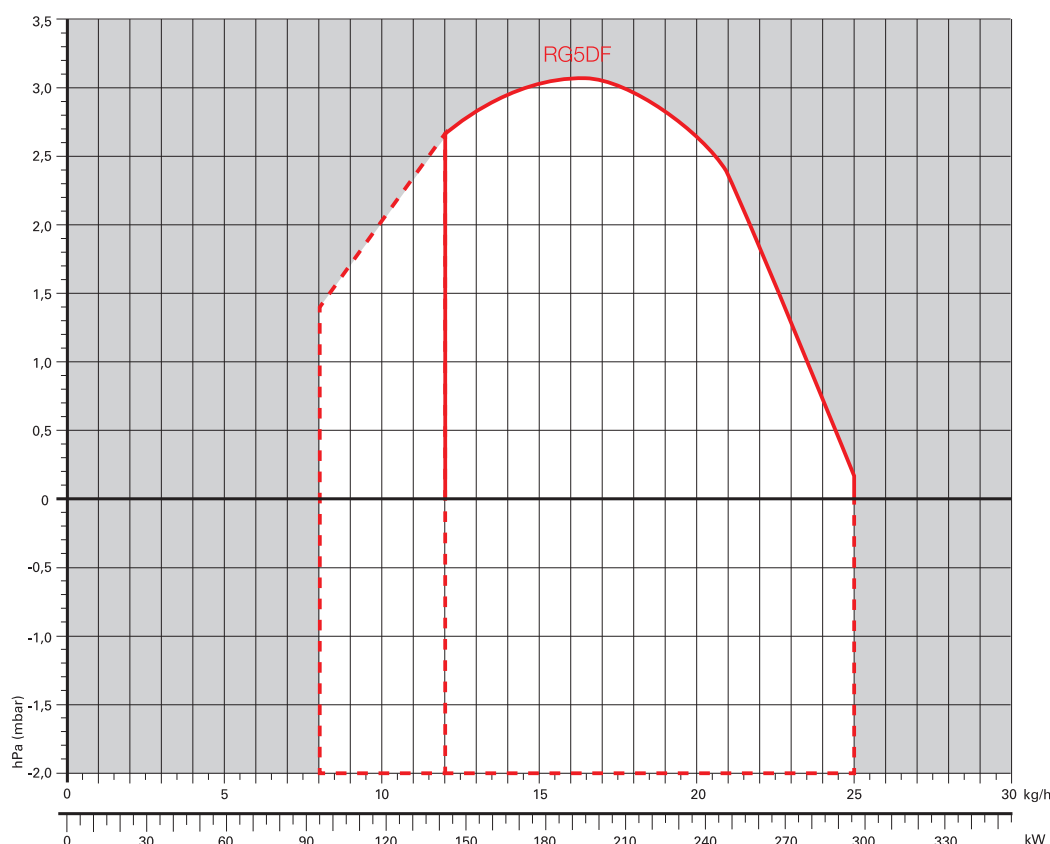


RG5DF

95/142 ÷ 296 kW

LIGHT OIL

FIRING RATES



Useful working field for choosing the burner



1st stage operation range

Test conditions conforming to EN267
Temperature: 20°C
Pressure: 1013,5 mbar
Altitude: 0 m a.s.l.

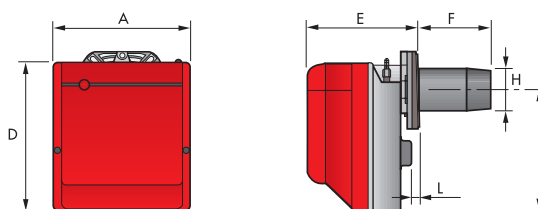
IMPORTANT:
For the part of the working field that is depressurised, refer to EN 746-2 Standard.

Two Stage Light Oil Burners

GULLIVER RGDF SERIES

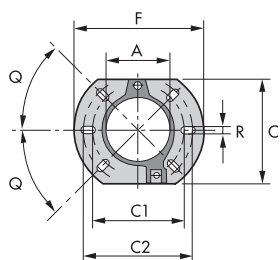
Overall dimensions (mm)

BURNER



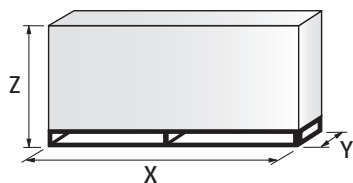
| MODEL | A | D | E | F | H | I | L |
|---------|-----|-----|-----|-----|-----|-----|------|
| ► RG5DF | 300 | 345 | 247 | 159 | 125 | 285 | 12,5 |

BURNER - BOILER MOUNTING FLANGE



| MODEL | A | C | C1 | C2 | F | Q | R |
|---------|-----|-----|-----|-----|-----|-----|----|
| ► RG5DF | 127 | 198 | 160 | 190 | 213 | 45° | 11 |

PACKAGING



| MODEL | X | Y | Z | kg |
|---------|-----|-----|-----|----|
| ► RG5DF | 510 | 345 | 440 | 18 |

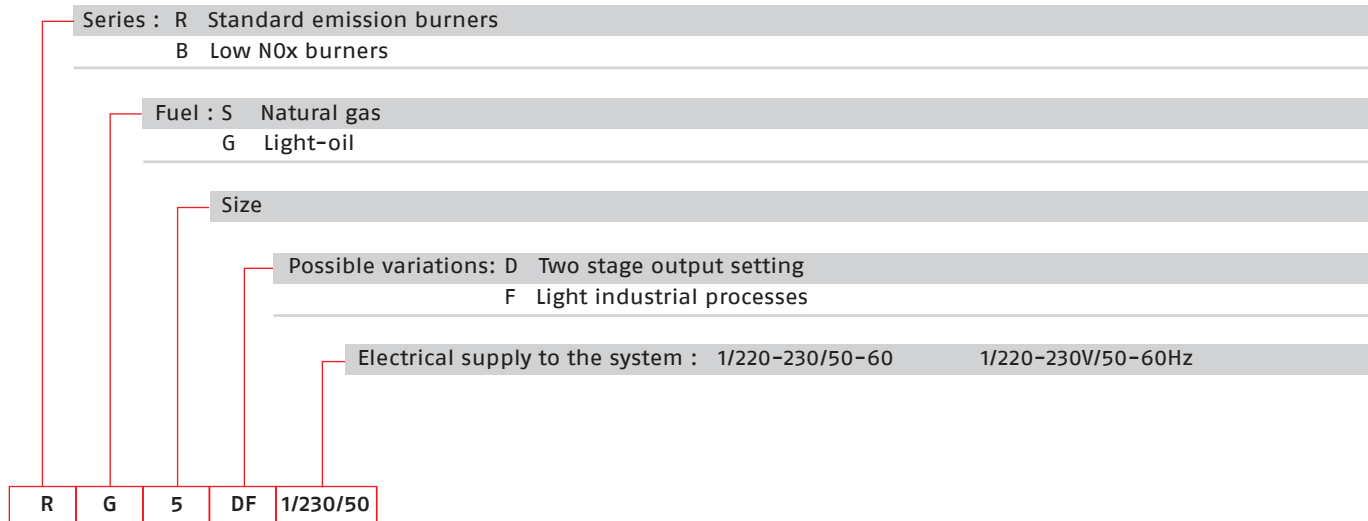
Two Stage Light Oil Burners

GULLIVER RGDF SERIES

RIELLO

Specification

DESIGNATION OF SERIES



LIGHT OIL

STATE OF SUPPLY

Completely automatic monobloc light oil burners, with two stage operation fitted with:

- Fan with forward curve blades
- Cover lined with sound-proofing material
- Air damper always open in stand-by
- Air damper, with 1st and 2nd stage adjustment (2nd stage adjustment without removing the casing)
- Single phase electric motor 220 - 230 V/ 50 - 60 Hz
- Combustion head fitted with:
 - stainless steel head cone, resistant to high temperatures
 - ignition electrodes
 - flame stability disk
- Geared pump for fuel supply, fitted with:
 - filter
 - pressure regulator
 - attachments for fitting a pressure gauge and vacuum meter
 - internal by-pass for preparing for single-pipe installations
- Fuel feed solenoid valve incorporated in the pump
- Photocell for flame detection
- Electronic flame control equipment
- Light oil nozzle
- IP X0D (IP 40) protection level.

Standard equipment

- Flange with insulating gasket
- Screw and nuts for flange
- Screws and nuts for flange to be fixed to the heat generator
- Flexible oil pipes with nipples
- 7-pin plug
- 4-pin plug
- Instruction handbook for installation, use and maintenance
- Spare parts catalogue.

Two Stage Light Oil Burners

GULLIVER RGDF SERIES

Available models

| CODE | MODEL | HEAT OUTPUT | | TOTAL ELECTRICAL POWER (kW) | CERTIFICATION | NOTE |
|---------|-----------------------|--------------|-----------|-------------------------------------|-------------------|------|
| | | (kW) | (kg/h) | | | |
| 3739870 | RG5DF 1/220-230/50-60 | 95/142 - 296 | 8/12 - 25 | 0,400 (at 50 Hz) - 0,575 (at 60 Hz) | CE - 0036 0325/01 | |

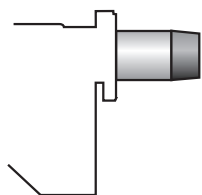
Net calorific value: 11,8 kWh/kg; 10200 kcal/kg - Viscosity at 20°C: 4÷6 mm²/s (cSt).
The burners of RGDF series are in according to EN 267 and 746-2.

Kerosene and ULSD

Gulliver RGDF series burners can be supplied, on demand, suitable for applications where combustion of Kerosene, Low Sulphur Kerosene and Ultra Low Sulphur Diesel Oil (ULSD) is the chosen fuel.

Burner accessories

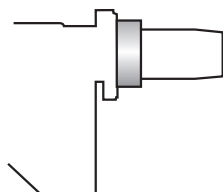
Extended head kit



Kits of extended heads are available.

| BURNER | STANDARD HEAD LENGTH (mm) | EXTENDED HEAD LENGTH (mm) | KIT CODE |
|---------|---------------------------|---------------------------|----------|
| ► RG5DF | 159 | 300 | 3000981 |

Spacer kit



By using the special accessories, the burner can be with-drawn to reduce head penetration into the combustion chamber.

| BURNER | SPACER THICKNESS S (mm) | KIT CODE |
|---------|-------------------------|----------|
| ► RG5DF | 25 | 3000673 |

Light oil filter



For cleaning light oil from dirty particles and impurities filters with the following features are available:

| BURNER | FILTERING DEGREE (µm) | KIT CODE |
|---------|-----------------------|----------|
| ► RG5DF | 60 | 3006561 |

Filter made up of aluminium body and stainless steel filtering cartridge; available singularly.

| BURNER | FILTERING DEGREE (µm) | KIT CODE |
|---------|-----------------------|----------|
| ► RG5DF | 60 | 3075011 |

Filter made up of aluminium cover, plastic tank and nylon filtering cartridge; available in packaging of 50 pieces.

Light oil filter/degassing unit



To solve problems of air or water in the oil circuit a special filter/degassing unit is available, made up of aluminium cover, plastic tank, stainless steel filtering cartridge, air release cap and water purge valve. It is available singularly.

| BURNER | FILTERING DEGREE (µm) | KIT CODE |
|---------|-----------------------|----------|
| ► RG5DF | 100 | 3000926 |

Two Stage Light Oil Burners

GULLIVER RGDF SERIES

RIELLO

Burner accessories

7-pin plug kit

If necessary a 7-pin plug kit is available (in packaging of n. 5 pieces).

| BURNER | KIT CODE |
|---------|----------|
| ► RG5DF | 3000945 |

Control box M0 550, sensor flame and short circuit plug



On request, we can supply a more efficient control box with following features:

- Digital technology
- Post-ignition of 3 seconds after safety time (total ignition time of 8 seconds)
- Multi-color LED signalling the various working stage
- Visual or PC interface diagnostic functions through multi-color LED device
- Remote lock-out reset (the connection is supplied with the M0 550 accessory)
- Recycling for 3 attempts if there is flame failure during operation
- Programmable post-purge (up to 6 minutes), continuous purge, long pre-purge (2 minutes)
- Post-combustion lock-out
- Logging of burner operation parameters (for example operating time, number and type of lock-outs)

| BURNER | KIT CODE |
|---------|-------------------------|
| ► RG5DF | 3001168+3007492+3007792 |